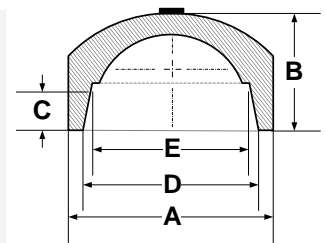


SOCKET FUSION FITTINGS

SHIPPING CAP

FOR REFERENCE ONLY

(SOCKET) IPS



2



Nominal Pipe Size	A Length ¹	B Length ¹	C Socket Length	D Socket Entrance	E Socket Bottom
3/4" IPS	1.425"	1.150"	0.625"	1.020" +/- .008	1.012" +.008/- .012
mm	36.20	29.21	15.88	25.91	25.70
1" IPS	1.800"	1.000"	0.685"	1.275" +/- .008	1.267" +.008/- .012
mm	45.72	25.40	17.40	32.38	32.18
1 1/4" IPS	1.950"	1.450"	0.875"	1.620" +/- .008	1.612" +.008/- .016
mm	49.53	36.83	22.23	41.15	40.94
1 1/2" IPS	2.250"	1.300"	0.875"	1.860" +/- .010	1.849" +.010/- .020
mm	57.15	33.02	22.23	47.24	46.96
2" IPS	2.725"	1.800"	0.875"	2.335" +/- .010	2.324" +.010/- .020
mm	69.22	45.72	22.23	59.31	59.03
3" IPS	3.850"	1.900"	1.000"	3.455" +/- .015	3.439" +.015/- .025
mm	97.79	48.26	25.40	87.76	87.35
4" IPS	5.200"	2.900"	1.125"	4.450" +/- .015	4.434" +.015/- .035
mm	132.08	73.66	28.58	113.03	112.62

¹ All values are nominal dimensions

² Drawing may not be exact representation of product

Note: Please contact a Rahn Customer Sales Rep for availability

Note: Available with valve for coil inflation

Note: Lighter than standard socket end caps

Rahn Plastics Incorporated
 54 Ferris Dr, North Bay (Local) 1-705-495-6777
 Ontario, Canada, P1A 4M3 (Toll Free) 1-888-433-0111
www.rahnplastics.com (Fax) 1-866-495-6820

