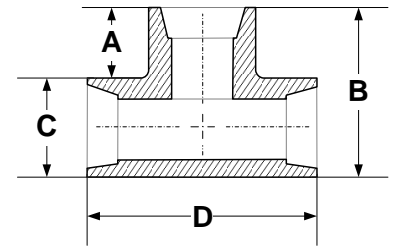


SOCKET FUSION FITTINGS

REDUCING TEE

FOR REFERENCE ONLY

(SOCKET) IPS



2

Nominal Pipe Size	A ¹	B ¹	C ¹	D ¹
1 x 1 x 3/4" IPS	0.700"	2.425"	1.725"	3.100"
mm	17.78	61.60	43.82	78.74
1 1/4 x 3/4 x 3/4" IPS	0.825"	3.125"	1.400"	4.100"
mm	20.96	79.38	35.56	104.14
1 1/4 x 1 x 3/4" IPS	0.775"	3.000"	1.800"	4.125"
mm	19.69	76.20	45.72	104.78
1 1/4 x 1 x 1" IPS	0.800"	3.050"	1.700"	4.100"
mm	20.32	77.47	43.18	104.14
1 1/4 x 1 x 1 1/4" IPS	1.025"	3.250"	1.600"	5.150"
mm	26.04	82.55	40.64	130.81
1 1/4 x 1 1/4 x 3/4" IPS	0.825"	3.075"	2.250"	4.250"
mm	20.96	78.11	57.15	107.95
1 1/4 x 1 1/4 x 1" IPS	0.800"	3.075"	2.250"	4.250"
mm	20.32	78.11	57.15	107.95
1 1/2 x 1 x 1" IPS	0.600"	3.150"	1.725"	4.350"
mm	15.24	80.01	43.82	110.49
1 1/2 x 1 1/4 x 3/4" IPS	0.600"	3.150"	2.175"	4.400"
mm	15.24	80.01	55.25	111.76
1 1/2 x 1 1/4 x 1" IPS	0.600"	3.130"	2.165"	4.375"
mm	15.24	79.50	54.99	111.13
1 1/2 x 1 1/2 x 1" IPS	0.600"	3.150"	2.500"	4.425"
mm	15.24	80.01	63.50	112.40
1 1/2 x 1 1/2 x 1 1/4" IPS	0.675"	3.150"	2.500"	4.475"
mm	17.15	80.01	63.50	113.67
2 x 3/4 x 3/4" IPS	0.825"	4.000"	1.950"	5.250"
mm	20.96	101.60	49.53	133.35
2 x 1 x 1" IPS	0.800"	4.000"	1.950"	5.250"
mm	20.32	101.60	49.53	133.35
2 x 1 1/4 x 3/4" IPS	0.800"	4.050"	2.400"	5.375"
mm	20.32	102.87	60.96	136.53
2 x 1 1/4 x 1" IPS	0.850"	4.000"	2.450"	5.400"
mm	21.59	101.60	62.23	137.16
2 x 1 1/4 x 1 1/4" IPS	0.900"	4.000"	2.425"	5.375"
mm	22.86	101.60	112.40	136.53
2 x 2 x 3/4" IPS	0.825"	4.000"	3.050"	5.425"
mm	20.96	101.60	77.47	137.80
2 x 2 x 1" IPS	0.860"	4.020"	3.060"	5.390"
mm	21.84	102.11	77.72	136.91
2 x 2 x 1 1/4" IPS	0.850"	4.025"	3.035"	5.420"
mm	21.59	102.24	77.09	137.67

¹All values are nominal dimensions
Sales Rep for availability and other sizing options

²Drawing may not be exact representation of product ^{Note}Please contact a Rahn Customer
^{Note}Please consult S/F Dimension Sheet (CSA Specifications) for SE, SB and SL dimensions.