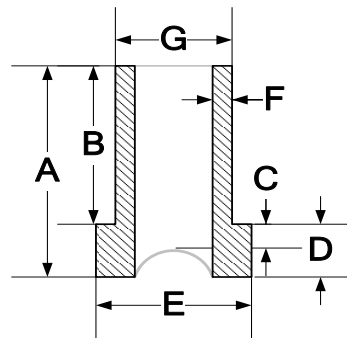


BUTT FUSION FITTINGS

BRANCH SADDLE

FOR REFERENCE ONLY

IPS & DIPS



Nominal Pipe Size	A Length ¹	B Length ¹	C Radius Height	D Hub Length	E Hub OD	F Wall	G OD
1" IPS (DR 9 only)	3.050"	2.100"	.200-.250"	.515"	1.445"	.146/.175	1.315" +/- .010
mm	77.47	53.34	5.08/6.35	13.08	36.70	3.71/4.45	33.40
1 1/4" IPS	7.500" +/- .100	5.225"	.500" +.050	1.500" +.050	2.000" +.050	.151/.181	1.660" +/- .010
mm	190.50	132.72	12.70	38.10	50.80	3.83/4.60	42.16
1 1/2" IPS	7.500" +/- .100	6.275"	.500" +.050	1.500" +.050	2.375" +.050	.173/.207	1.900" +/- .010
mm	190.50	159.39	12.70	38.10	60.33	4.39/5.26	48.26
2" IPS	7.600" +/- .100	5.850"	1.000" +.050	1.500" +.050	2.650" +.050	.216/.259	2.375" +/- .010
mm	193.04	148.59	25.40	38.10	67.31	5.48/6.58	60.33
3" IPS	5.875" +/- .250	4.875"	1.000" +.050	2.125" +.050	4.000" +.050	.318/.382	3.500" +/- .012
mm	149.23	123.83	25.40	53.98	101.60	8.08/9.70	88.90
4" IPS	7.500" +/- .250	4.800"	1.500" +.050	2.500" +.050	5.000" +.110	.409/.491	4.500" +/- .015
mm	190.50	121.92	38.10	63.50	127.00	10.39/12.47	114.30
4" DIPS	7.500" +/- .250	4.800"	1.500" +.050	2.500" +.050	5.000" +.110	.436/.524	4.800" +/- .022
mm	190.50	121.92	38.10	63.50	127.00	11.08/13.30	121.92
6" IPS	10.000" +/- .250	6.625"	1.500" +.050	3.000" +.050	7.375" +.050	.506/.607	6.625" +/- .018
mm	254.00	168.28	38.10	76.20	187.33	15.30/18.36	168.28
6" DIPS	10.000" +/- .100	6.625"	1.500" +.050	3.000" +.050	8.600" +.050	.627/.753	6.900" +/- .031
mm	254.00	168.28	38.10	76.20	218.44	15.93/19.12	175.26
8" IPS (8-14 R)	11.000" +/- .250	6.575"	2.000 ^{+0.050 8-14"}	4.250" +.050	9.250" +.050	.784/.941	8.625" +/- .025
Mm	279.40	167.01	50.80	107.95	234.95	19.92/23.90	219.08
8" IPS (16+ R)	11.000" +/- .250	6.575"	2.750 ^{+0.050 16+ R}	4.250" +.050	9.250" +.050	.784/.941	8.625" +/- .025
mm	279.40	167.01	69.85	107.95	234.95	19.92/23.90	219.08

¹ All values are nominal dimensions

² Drawing may not be exact representation of product

Note Please contact a Rahn Customer Sales Rep for availability

Note All Wall measurements calculated using SDR 11 (unless otherwise noted)

Note See SDR Chart for other wall thicknesses

Radius Chart

Size	Radius	Size	Radius	Size	Radius
2"	1.188"	10"	5.375"		
3"	1.750"	12"	6.375"		
4"	2.250"	14" sized radius and above are divided in half (i.e. 14" Radius is = 7.000") Ask a Rahn CSR about large radiused fittings (up to 63") now available			
6"	3.313"				
8"	4.313"				

Rahn Plastics Incorporated
 54 Ferris Dr, North Bay (Local) 1-705-495-6777
 Ontario, Canada, P1A 4M3 (Toll Free) 1-888-433-0111
www.rahnplastics.com (Fax) 1-866-495-6820

